

Ripley's

**Believe It or Not!**

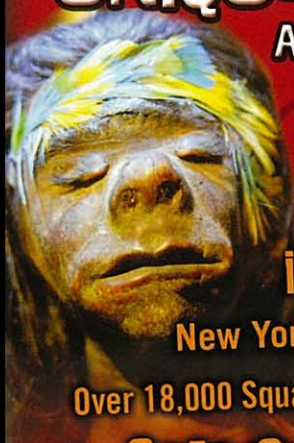
**ODDITORIUM.**

TIMES SQUARE

NEW YORK'S MOST FASCINATING

**UNIQUE & EXCITING**

ATTRACTION



**HUNDREDS**  
of Astonishing Artifacts

Dozens of Incredible  
**INTERACTIVE ELEMENTS**

New York's **ONLY** Laser Race

Over 18,000 Square Feet of **THEMED** Galleries

Live **SIDESHOW** Performances

**EXTREME** Sleepovers &

**FANTASTIC** Field Trips

**SUBWAY:** **A** **C** or **E** to 42nd Street/Port Authority  
**1** **2** **3** **N** **R** **Q** **7** or **S** to  
Times Square/42nd Street  
**F** **V** **B** or **D** to 42nd Street/Bryant Park

**BUS:** The M57, M16, M11, M42  
and M104 all stop within a few blocks



**OPEN DAILY 9 AM\*\***

234 West 42nd St | New York, NY

(between 7th & 8th Avenues)

[www.ripleysnewyork.com](http://www.ripleysnewyork.com)



\*\*Last ticket sold one hour prior to closing. Seasonal hours may differ, check website for updates.  
Ripley's Believe It or Not! and Odditorium are trademarks of Ripley Entertainment Inc.